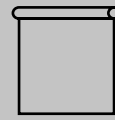


SOLE

OSCURANTE
H 89 MM - H 127 MM - H 183 CM - H 300 CM



IGNIFUGO



RULLO

H 183 CM



002



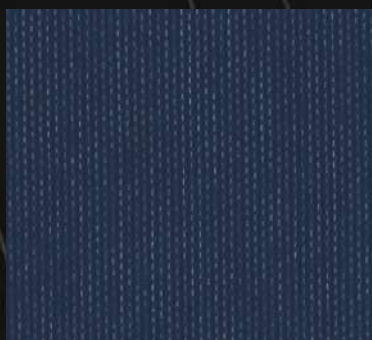
003



004

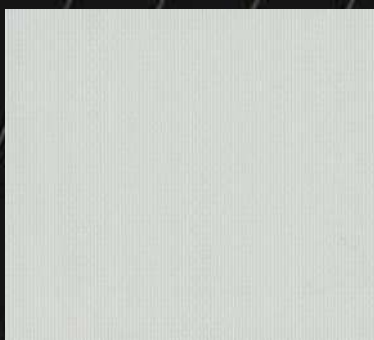


005

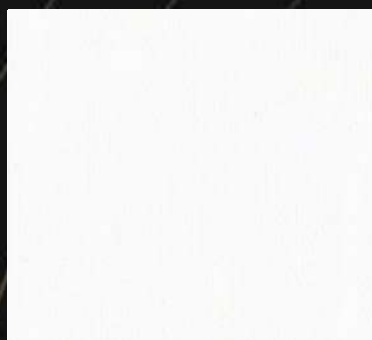


006

H 300 CM



001



007



008



009

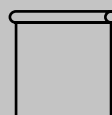
SOLE

OSCURANTE

H 89 MM - H 127 MM - H 183 CM - H 300 CM



IGNIFUGO



RULLO

OSCURANTE
H 89 MM
H 127 MM
H 183 CM
H 300 CM



INFORMAZIONI TECNICHE

| | |
|--------------------------|---|
| ALTEZZA | 89 mm - 127 mm - 183 cm - 300 cm |
| PESO TOTALE | H 89, 127, 183: 407 g/m ² H 300: 420 g/m ² |
| SPESSORE | 0,29 ± 0,04 mm |
| COMPOSIZIONE | 25% FVR - 75% PVC |
| COMPORAMENTO ALLA FIAMMA | IGNIFUGO |
| MANUTENZIONE | PULIRE CON PANNO UMIDO |

| COLORE | TS% | RS% | AS% | G.TOT* VETRO B |
|--------|-----|-----|-----|-------------------|
| 002 | 0 | 4 | 96 | 0,31 |
| 003 | 0 | 4 | 96 | 0,31 |
| 004 | 0 | 58 | 42 | 0,26 |
| 005 | 0 | 4 | 96 | 0,31 |
| 006 | 0 | 4 | 96 | 0,31 |
| 001 | 0 | 58 | 42 | 0,26 |
| 007 | 0 | 71 | 29 | 0,24 |
| 008 | 0 | 58 | 42 | 0,26 |
| 009 | 0 | 71 | 29 | 0,24 |

TS: Trasmissione solare
RS: Riflessione solare
AS: Assorbimento solare
GTOT: Fattore solare

*Definito con il metodo UNI EN 13363-1,
utilizzando il vetro tipologia "B"



TECNO