

NETTUNO

FILTRANTE
H 89 MM - 127 MM



IGNIFUGO



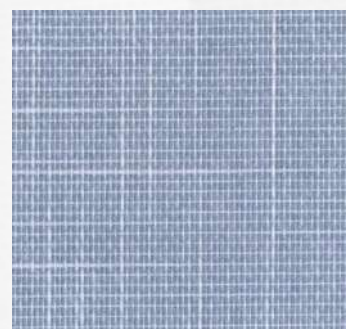
VERTICALI



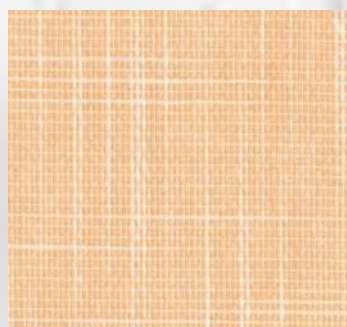
000



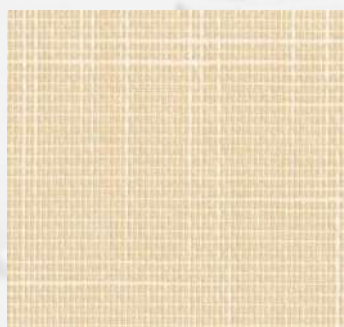
001



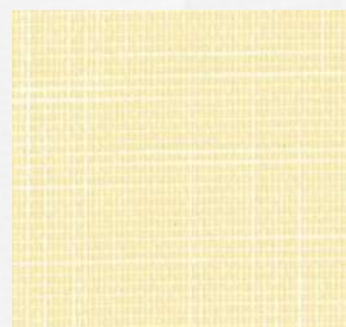
011



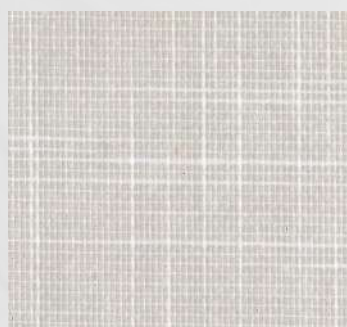
012



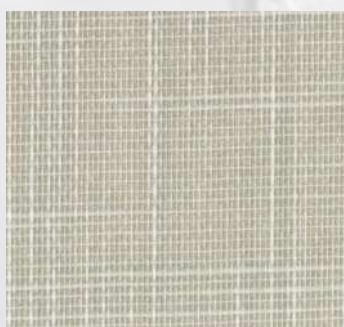
021



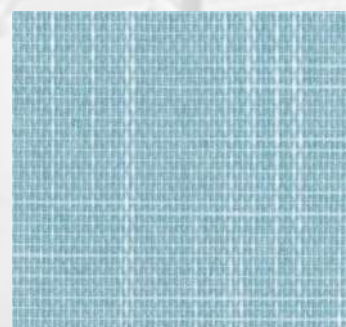
022



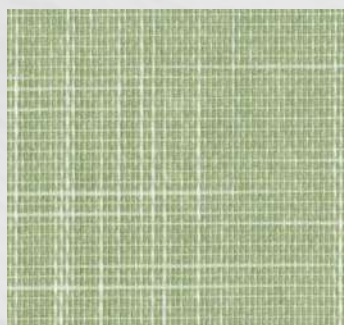
052



053



112



006



FILTRANTE
H 89 MM
H 127 MM



INFORMAZIONI TECNICHE

| | |
|---------------------------|---------------------------|
| LARGHEZZA BANDA | 89 mm - 127 mm |
| PESO TOTALE | 235 ± 10 g/m ² |
| SPESSORE | 0,40 ± 0,05 mm |
| COMPOSIZIONE | 100% PES |
| COMPORTAMENTO ALLA FIAMMA | IGNIFUGO |
| MANUTENZIONE | PULIRE CON PANNO UMIDO |

| COLORE | TL% | RL% | AL% | G.TOT* VETRO C |
|--------|-------|-------|-------|-------------------|
| 000 | 42 | 52 | 5 | 0,46 |
| 001 | 42 | 52 | 5 | 0,46 |
| 006 | 25-31 | 31-42 | 27-43 | 0,51 |
| 011 | 25-31 | 31-42 | 27-43 | 0,51 |
| 012 | 25-31 | 31-42 | 27-43 | 0,51 |
| 021 | 25-31 | 31-42 | 27-43 | 0,51 |
| 022 | 25-31 | 31-42 | 27-43 | 0,51 |
| 052 | 25-31 | 31-42 | 27-43 | 0,51 |
| 053 | 25-31 | 31-42 | 27-43 | 0,51 |
| 112 | 25-31 | 31-42 | 27-43 | 0,51 |

TL: Trasmissione luce
RL: Riflessione luce
AL: Assorbimento luce
GTOT: Fattore solare

*Definito secondo la norma UNI EN 14501, utilizzando il vetro di tipo "C": vetro doppio isolante con deboli emissioni sul lato 3 (4+16+4; riempimento con gas Argon) g=0,59-U=1,2