

VENERE

FILTRANTE
H 89 MM - H 127 MM



IGNIFUGO



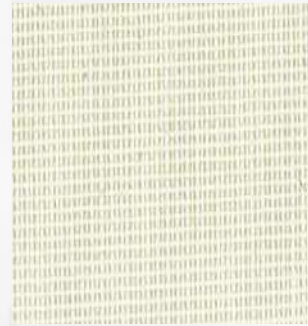
VERTICALI



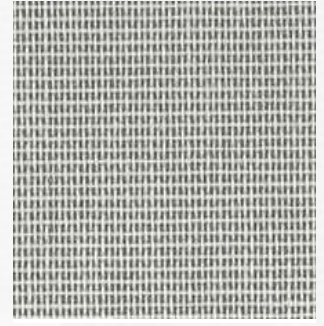
000



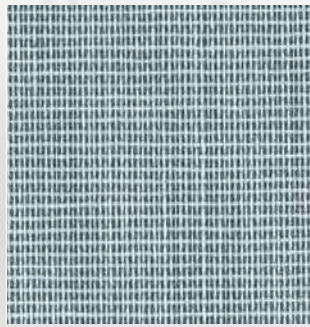
001



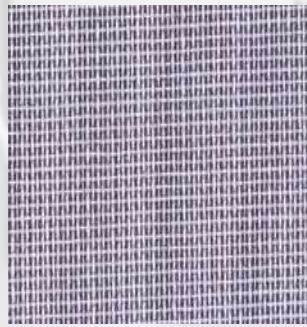
002



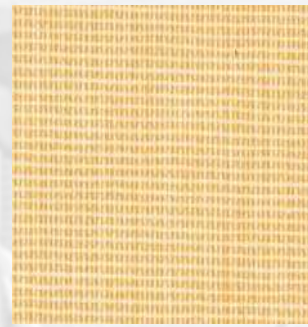
003



005



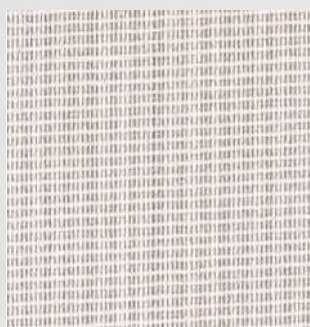
014



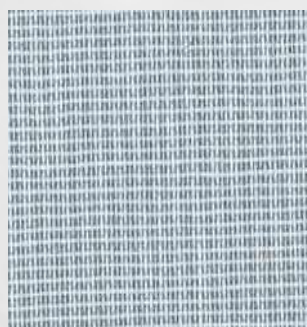
015



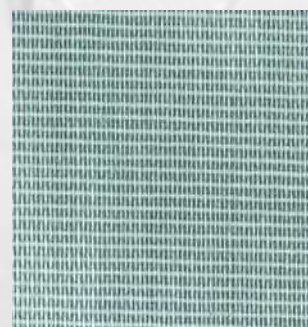
021



022



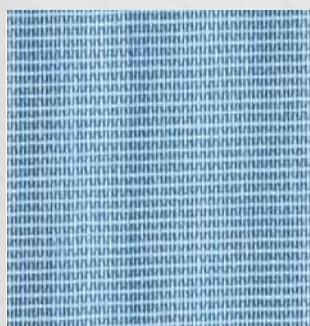
051



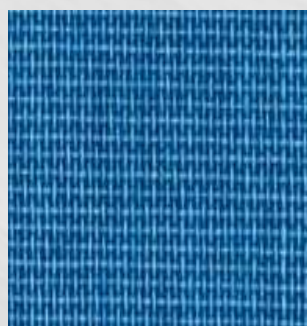
063



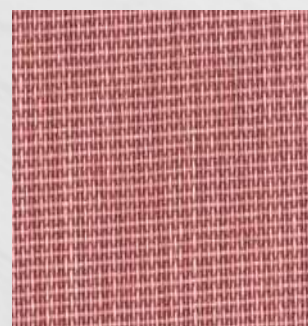
071



111



112



013

VENERE

FILTRANTE
H 89 MM - H 127 MM



IGNIFUGO



VERTICALI

FILTRANTE
H 89 MM
H 127 MM



INFORMAZIONI TECNICHE

LARGHEZZA BANDA	89 mm - 127 mm
PESO TOTALE	210 ± 20 g/m ²
SPESSORE	0,30 ± 0,05 mm
COMPOSIZIONE	100% PES
COMPORTAMENTO ALLA FIAMMA	IGNIFUGO
MANUTENZIONE	PULIRE CON PANNO UMIDO

COLORE	TL%	RL%	AL%	G.TOT* VETRO C
000	57	36	7	0,59
001	54	36	10	0,59
002	48	31	21	0,59
003	27	52	21	0,59
005	29	26	45	0,59
013	11	44	45	0,59
014	24	50	26	0,59
015	26	52	22	0,59
021	34	36	30	0,59
022	39	45	16	0,59
051	31	30	39	0,59
063	28	53	19	0,59
071	1	18	81	0,59
111	27	57	16	0,59
112	12	24	64	0,59

TL: Trasmissione luce
RL: Riflessione luce
AL: Assorbimento luce
GTOT: Fattore solare

*Definito secondo la norma UNI EN 14501,
utilizzando il vetro di tipo "C": vetro doppio isolante con deboli emissioni sul lato 3
(4+16+4; riempimento con gas Argon) g=0,59-U=1,2

TECNO